

ncfe.

Business Administration and Management

Catering and Hospitality

Children and Young People

Creative, Design and Digital

Early Years Education

Education, Training and Assessment

Health and Science

Health and Social Care

Retail

 **Sport, Public Services and Travel**

Transport, Engineering and Construction

**Open up our progression map
to plot your learner journeys and
plan your curriculum.**



sport, public services and travel.

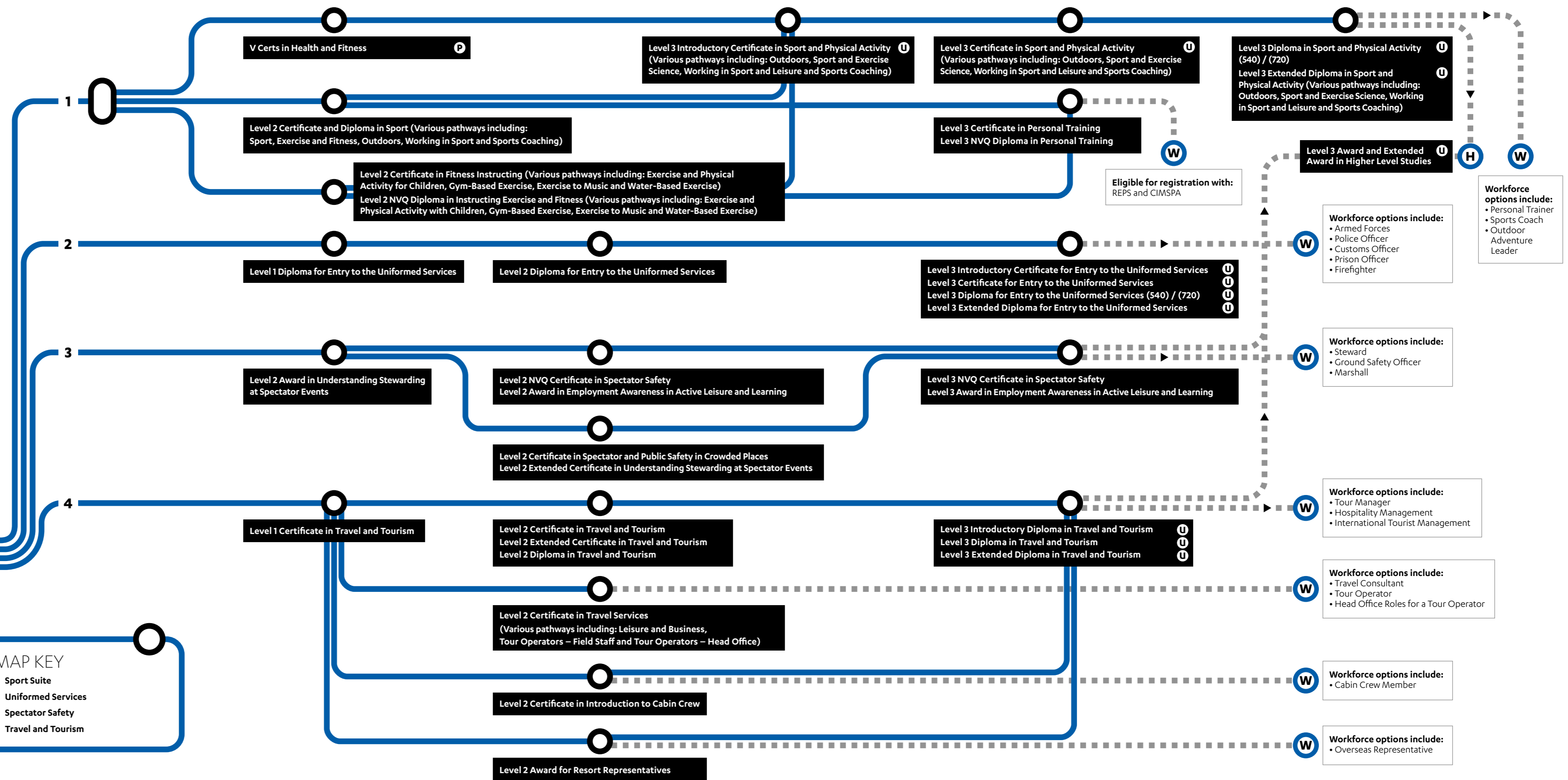
Progression map

This progression map details many of the qualifications available within this sector but is just a taster of what we have to offer. Please visit our website www.QualHub.co.uk to view our full portfolio.

- Level 1 Certificate in Sport
- Level 1 Award in Principles of Coaching Sport
Level 2 Award in Principles of Coaching Sport
- Level 2 Award and Certificate in Improving Personal Exercise, Health and Nutrition
- Level 1 Award in Exercise Studies
- Occupational Studies Suite from Entry Level – Level 2
- Level 1 Award in Personal Development for the Outdoor Industry

MAP KEY

- 1 Sport Suite
- 2 Uniformed Services
- 3 Spectator Safety
- 4 Travel and Tourism





Your curriculum planning tool

Whether you're based in a college, training provider or school, this document has been designed to help you plan which qualifications you'd like to deliver.

Remember to visit www.QualHub.co.uk to view our full portfolio of qualifications across all sectors.

Using this product guide

Qualifications are grouped into subject areas which makes the document easy to navigate.

A Level 1 Certificate in Health and Fitness

D Minimum Entry Age: 14 **LRA** **PP** **v.certs** **C**

FACTS AND FIGURES	
Qualification no/Learning Aim Reference:	601/4662/X B
Guided Learning Hours (GLH):	122
Total Qualification Time (TQT):	180
Credit Value:	N/A G
H Learning Resources Available: NCFE	
This V Cert features on the list of DfE approved qualifications and will be recognised in the 2018 and 2019 Key Stage 4 Performance Tables.	

F If you're interested in this qualification you may also be interested in:
Level 2 Certificate in Health and Fitness

KEY

- APP** Apprenticeship Standard or Framework
- LRA** Learning Resources Available
- PP** Performance Points
- UCAS** UCAS

Please note, all qualifications in this guide are eligible for funding. Please check the ESFA Hub and relevant Funding Rules or Guidance for confirmation on which funding streams they're eligible under plus the learner eligibility criteria.

Understanding the qualification pages

- A** This is the qualification title.
- B** This is the Qualification Reference Number (QRN).
- C** If the qualification is a V Cert, the V Cert logo will appear here.
- D** This is the recommended entry age for the qualification.
- E** The icons in this area are intended to give you more information about each of the qualifications. This includes whether it holds performance points, UCAS points as well as if it's supported by learning resources. Please see the key to find out what each icon means.
- F** This feature helps you to understand which qualifications complement the one you're looking at.
- G** The credit value (if applicable) for the qualification will appear here.
- H** All qualifications are supported by a Qualification Specification. However, in many cases, there are additional materials available including sample portfolios, learning and delivery resources from NCFE, CACHE or third parties. If these additional learning resources are available for the qualification, we'll list who they're supplied by here.

Working together

The best teams work together as a unit to achieve outstanding results. That's why we work with a network of established third parties to provide a wide range of materials to support our qualifications. Here you'll find further information about each third party and how they can help you.



Website:
www.hallmarkeducation.org.uk
Email:
info@hallmarkeducation.org.uk
Phone:
01332 410 067

Hallmark Education

Hallmark Education publishes high quality learning resources to support the cost-effective delivery of a wide range of NCFE qualifications.

The team at Hallmark has been helping NCFE and CACHE centres for over 10 years.

With a wealth of experience in educational publishing, learner recruitment, tutor training and audit compliance, Hallmark can offer services including:

- high-quality learning resources
- tutor support
- consultancy
- employer engagement and learner find.



Website:
www.hoddereducation.co.uk
Email:
educationenquiries@hodder.co.uk
Phone:
01235 827 720

Hodder Education

Hodder Education, winner of the Bookseller Industry Awards for 'Educational, Academic and Professional Publisher of the Year' 2015 and 2016, publishes a wide range of market-focused innovative print resources and digital services, designed for core UK and key international markets.

Hodder Education is one of the largest school publishers in the UK, trusted to help teachers teach and students learn through its wide range of high quality resources, and training events. Hodder Education supports the curriculum in almost every subject area and at every level, selling to over 140 countries worldwide.



Website:
www.laserlearning.co.uk
Email:
info@lasersys.co.uk
Phone:
01753 584 112

Laser Systems

Laser Systems team members are education professionals with a wealth of knowledge and experience in quality and assessment, and have created an e-portfolio which is intuitive for both assessing teams and learners.

As well as an industry-leading e-portfolio, Laser Systems also provides high-quality online learning resources for full qualifications and CPD short courses. Learning resources combine filmed tutorials with a professional presenter, video good practice examples, reading, extended learning, and an interactive quiz. For full qualifications, available learning resources cover knowledge for each learning outcome. Laser Systems prides itself on its customer service, providing support and guidance for Laser users from day one, and takes part in events and standardisation days alongside NCFE and CACHE.



Website:
www.learningcurvegroup.co.uk
Email:
salesteam@learningcurvegroup.co.uk
Phone:
01388 777 129

Learning Curve Group

Learning Curve Group (LCG) supports over 200 NCFE and CACHE centres with strategies that increase adult learning engagement. Their services include:

- NCFE and CACHE approved learning and assessment content, available both online and in paper formats, for AEB, Apprenticeships and loan funded provision.
- An innovative online learning and assessment platform that provides a quick and efficient tracking mechanism, enabling providers to monitor learner progression.
- Consultancy services led by respected FE specialist Beej Kaczmarczyk.
- Recruitment of applicants for PAYE and self-employed vacancies.
- Support with links to levy paying employers.

LCG aims to maximise your offer around loans, levy and localism whilst also enabling best practice that keeps learners safe.



Website:
www.theskillsnetwork.com
Email:
enquiries@theskillsnetwork.com
Phone:
01757 210 022

The Skills Network

The Skills Network is one of the UK's most successful providers of technology-enabled training and skills solutions.

They support educators, employers and learners across the UK, and internationally, by developing and delivering effective and innovative skills training and published educational content. The Skills Network currently pride themselves on having an overall achievement rate of 91%.

Constantly developing new, innovative and engaging ways to deliver learning and training opportunities, they strive to maintain and improve on their market-leading status.

Sport, Public Services and Travel Product Guide

We also offer product guides in the following sectors:

- Business Administration and Management
- Catering and Hospitality
- Children and Young People
- Creative, Design and Digital
- Early Years Education
- Education, Training and Assessment
- Health and Science
- Health and Social Care
- Retail
- Transport, Engineering and Construction

For details on the many qualifications that will support learners' general progression, please see our Supporting Qualifications document.

Occupational Studies

Entry Level 3 Award in Exploring Occupational Studies for the Workplace

Entry Level 3 Award/Certificate/Diploma in Occupational Studies for the Workplace

Minimum Entry Age: 14 **LRA**

FACTS AND FIGURES

	AWARD (EXPLORING)	AWARD	CERTIFICATE	DIPLOMA
Qualification no/Learning Aim Reference:	601/1073/9	601/1186/0	601/1185/9	601/1015/6
Guided Learning Hours (GLH):	24	40	100	328
Total Qualification Time (TQT):	30	60	130	370
Credit Value:	3	6	13	37

Learning Resources Available: NCFE

Level 1 Award in Exploring Occupational Studies for the Workplace

Level 1 Award/Certificate/Diploma in Occupational Studies for the Workplace

Minimum Entry Age: 14 **LRA**

FACTS AND FIGURES

	AWARD (EXPLORING)	AWARD	CERTIFICATE	DIPLOMA
Qualification no/Learning Aim Reference:	601/1086/7	601/1087/9	601/1088/0	601/1089/2
Guided Learning Hours (GLH):	19	35	88	259
Total Qualification Time (TQT):	30	60	130	370
Credit Value:	3	6	13	37

Learning Resources Available: NCFE



If you're interested in these qualifications you may also be interested in:

Functional Skills qualifications in Information and Communication Technology (ICT) at **Entry Level 3**

ncfe.

from learning into work.



At NCFE, we want to ensure that learners acquire the skills and mindset they need to land their dream job and progress in their careers.

Explore our range of 'next generation' employability learning programmes that have been specifically designed to help prepare learners for the world of work.

From Employability Skills to Job Search and Interview Skills and Occupational Studies, we have the short qualifications which help learners stand out from the crowd.

find out more.

Visit: ncfe.org.uk Call: 0191 240 8833 Email: businessdevelopment@ncfe.org.uk

Level 2 Award in Exploring Occupational Studies for the Workplace Level 2 Award/Certificate/Diploma in Occupational Studies for the Workplace

Minimum Entry Age: 14

FACTS AND FIGURES

	AWARD (EXPLORING)	AWARD	CERTIFICATE	DIPLOMA
Qualification no/Learning Aim Reference:	601/1497/6	601/1424/1	601/1423/X	601/1425/3
Guided Learning Hours (GLH):	20	42	92	296
Total Qualification Time (TQT):	30	60	130	370
Credit Value:	3	6	13	37

Employment Awareness

Level 2 Award in Employment Awareness in Active Leisure and Learning

Minimum Entry Age: 16 **LRA**

FACTS AND FIGURES

Qualification no/Learning Aim Reference:	501/1810/9
Guided Learning Hours (GLH):	45
Total Qualification Time (TQT):	60
Credit Value:	6

Learning Resources Available: NCFE

Level 3 Award in Employment Awareness in Active Leisure and Learning

Minimum Entry Age: 16 **LRA**

FACTS AND FIGURES

Qualification no/Learning Aim Reference:	501/1812/2
Guided Learning Hours (GLH):	61
Total Qualification Time (TQT):	80
Credit Value:	8

Learning Resources Available: NCFE

Level 1 Award in Personal Development for the Outdoor Industry

Minimum Entry Age: 14 **LRA**

FACTS AND FIGURES

Qualification no/Learning Aim Reference:	501/1080/9
Guided Learning Hours (GLH):	97
Total Qualification Time (TQT):	120
Credit Value:	12

Learning Resources Available: NCFE

Health and Fitness

Level 1 Award in Exercise Studies

Minimum Entry Age: 14 LRA

FACTS AND FIGURES

Qualification no/Learning Aim Reference:	500/7997/9
Guided Learning Hours (GLH):	90
Total Qualification Time (TQT):	120
Credit Value:	12

Learning Resources Available: NCFE / The Skills Network / Hallmark Education

Level 1/2 Technical Award in Health and Fitness

Minimum Entry Age: 14 LRA PP **v.certs**

FACTS AND FIGURES

Qualification no/Learning Aim Reference:	603/2650/5
Guided Learning Hours (GLH):	120
Total Qualification Time (TQT):	157

Learning Resources Available: NCFE / Hodder

This V Cert features on the list of DfE approved qualifications and will be recognised in the 2020 Key Stage 4 Performance Tables.

Level 1 Certificate in Health and Fitness

Minimum Entry Age: 14 LRA PP **v.certs**

FACTS AND FIGURES

Qualification no/Learning Aim Reference:	601/4662/X
Guided Learning Hours (GLH):	122
Total Qualification Time (TQT):	180

Learning Resources Available: NCFE

This V Cert features on the list of DfE approved qualifications and will be recognised in the 2018 and 2019 Key Stage 4 Performance Tables.

Level 2 Certificate in Health and Fitness

Minimum Entry Age: 14 LRA PP **v.certs**

FACTS AND FIGURES

Qualification no/Learning Aim Reference:	601/4534/1
Guided Learning Hours (GLH):	122
Total Qualification Time (TQT):	180

Learning Resources Available: NCFE

This V Cert features on the list of DfE approved qualifications and will be recognised in the 2018 and 2019 Key Stage 4 Performance Tables.

Level 2 Award and Certificate in Improving Personal Exercise, Health and Nutrition

Minimum Entry Age: 14 LRA

FACTS AND FIGURES

	AWARD	CERTIFICATE
Qualification no/Learning Aim Reference:	500/8516/5	603/2831/9
Guided Learning Hours (GLH):	90	110
Total Qualification Time (TQT):	90	135

Learning Resources Available: NCFE / Hallmark Education (Award only) / Learning Curve Group (Certificate only)



If you're interested in these qualifications you may also be interested in:
 Level 2 Certificate in Fitness Instructing / Level 2 Award/Certificate in Nutrition and Health
 Level 2 and 3 Certificate/Diploma in Sport

Sport

Level 1 Certificate in Sport

Minimum Entry Age: 14 LRA

FACTS AND FIGURES

Qualification no/Learning Aim Reference:	601/2623/1
Guided Learning Hours (GLH):	158
Total Qualification Time (TQT):	200
Credit Value:	20

Learning Resources Available: NCFE

ncfe.

Accredit. Customise. Endorse.

we'll work for you.

Our brand new Accreditation Services give you the opportunity to add the stamp of approval to your in-house training and qualifications with official recognition from one of the UK's leading Awarding Organisations.

Our Accreditation Services cater for all sizes of learning. This could be anything as small as an online training module to full qualification suites – there's no training too big or small!

Get in touch to find out how our Accreditation Services can work for you.
Email: businessdevelopment@ncfe.org.uk **Call:** 0191 240 8833

Level 2 Certificate and Diploma in Sport
 (Outdoors / Sport and Exercise Science / Working in Sport and Leisure / Sports Coaching)

Minimum Entry Age: 14

FACTS AND FIGURES

	CERTIFICATE	DIPLOMA
Qualification no/Learning Aim Reference:	601/3037/4	601/3038/6
Guided Learning Hours (GLH):	180	290
Total Qualification Time (TQT):	240	420
Credit Value:	24	42

Level 3 Introductory Certificate, Certificate, Diploma (540), Diploma (720), Extended Diploma in Sport and Physical Activity
 (Outdoors / Sport and Exercise Science / Working in Sport and Leisure / Sports Coaching)

Minimum Entry Age: 16 **LRA** **UCAS**

FACTS AND FIGURES

	INTRODUCTORY CERTIFICATE	CERTIFICATE	DIPLOMA (540)	DIPLOMA (720)	EXTENDED DIPLOMA
Qualification no/Learning Aim Reference:	601/8877/7	601/8878/9	601/8881/9	601/8882/0	601/8883/2
Guided Learning Hours (GLH):	180	360	540	720	1080
Total Qualification Time (TQT):	210	420	630	840	1260

Learning Resources Available: NCFE



If you're interested in these qualifications you may also be interested in:
 Level 3 Award and Extended Award Higher Level Studies

Coaching, Training and Instructing

Level 1 Award in the Principles of Coaching Sport

Minimum Entry Age: 14 **LRA**

FACTS AND FIGURES

Qualification no/Learning Aim Reference:	600/0460/5
Guided Learning Hours (GLH):	33
Total Qualification Time (TQT):	40
Credit Value:	4

Learning Resources Available: NCFE

Level 2 Award in the Principles of Coaching Sport

Minimum Entry Age: 14 **LRA**

FACTS AND FIGURES

Qualification no/Learning Aim Reference:	500/9847/0
Guided Learning Hours (GLH):	63
Total Qualification Time (TQT):	90
Credit Value:	9

Learning Resources Available: NCFE

Level 2 Certificate in Fitness Instructing
(Exercise and Physical Activity for Children / Gym-Based Exercise / Exercise to Music / Water-Based Exercise)

Minimum Entry Age: 16 LRA

FACTS AND FIGURES

Qualification no/Learning Aim Reference:	500/8513/X
Guided Learning Hours (GLH):	157
Total Qualification Time (TQT):	230
Credit Value:	23

Learning Resources Available: NCFE



If you're interested in this qualification you may also be interested in:
Level 3 Award and Extended Award Higher Level Studies

Level 2 NVQ Diploma in Instructing Exercise and Fitness
(Exercise and Physical Activity for Children / Gym-Based Exercise / Exercise to Music / Water-Based Exercise)

Minimum Entry Age: 16 LRA

FACTS AND FIGURES

Qualification no/Learning Aim Reference:	501/1996/5
Guided Learning Hours (GLH):	242
Total Qualification Time (TQT):	370
Credit Value:	37

Learning Resources Available: NCFE

Level 3 Certificate in Personal Training

Minimum Entry Age: 16 LRA

FACTS AND FIGURES

Qualification no/Learning Aim Reference:	500/8526/8
Guided Learning Hours (GLH):	245
Total Qualification Time (TQT):	360
Credit Value:	36

Learning Resources Available: NCFE



Create a curriculum to suit your learners

Try something new

Giving your learners a well-rounded curriculum can be difficult, but with qualifications from NCFE and CACHE you can offer:

- technical solutions for your vocational learners
- a broad range of subject areas
- qualifications with clear routes into the workplace or further education
- PSHE and employability qualifications

Many of our V Cert qualifications come with performance points for 2020 and are supported by a range of high-quality resources, training events and delivery support. Speak to our team today to find out more.

Thinking about their next steps?

Applied Generals from NCFE and CACHE are rigorous A Level alternatives which hold performance points, UCAS points and come with high-quality resources and expertise to support your delivery.

Simple in structure, familiar in assessment style and small enough to fit into your curriculum, Applied Generals are the ideal way to support vocational learners within a school or 6th form college environment.

Art and Design | Business and Enterprise | Child Development and Care
Employability | Engineering | Graphic Design | Health and Fitness
Health and Social Care | Interactive Media | Music Technology | Performance Skills | PSHE

Speak to our team today

0191 240 8833 businessdevelopment@ncfe.org.uk ncfe.org.uk/schools

Level 3 NVQ Diploma in Personal Training

Minimum Entry Age: 16 **LRA**

FACTS AND FIGURES	
Qualification no/Learning Aim Reference:	501/1999/0
Guided Learning Hours (GLH):	295
Total Qualification Time (TQT):	480
Credit Value:	48
Learning Resources Available: NCFE	

Level 3 Diploma in Personal Training

Minimum Entry Age: 16

FACTS AND FIGURES	
Qualification no/Learning Aim Reference:	603/3491/5
Guided Learning Hours (GLH):	295
Total Qualification Time (TQT):	495

Uniformed Services

Level 1 Diploma for Entry to the Uniformed Services

Minimum Entry Age: 14 **LRA**

FACTS AND FIGURES	
Qualification no/Learning Aim Reference:	601/2457/X
Guided Learning Hours (GLH):	325
Total Qualification Time (TQT):	370
Credit Value:	37
Learning Resources Available: NCFE	

Level 2 Diploma for Entry to the Uniformed Services

Minimum Entry Age: 14 **LRA**

FACTS AND FIGURES	
Qualification no/Learning Aim Reference:	601/2456/8
Guided Learning Hours (GLH):	370
Total Qualification Time (TQT):	430
Credit Value:	43
Learning Resources Available: NCFE	

Level 3 Introductory Certificate for Entry to the Uniformed Services

Minimum Entry Age: 16 **LRA** **UCAS**

FACTS AND FIGURES	
Qualification no/Learning Aim Reference:	601/8790/6
Guided Learning Hours (GLH):	180
Total Qualification Time (TQT):	220
Learning Resources Available: NCFE	

Level 3 Certificate for Entry to the Uniformed Services

Minimum Entry Age: 16 **LRA** **UCAS**

FACTS AND FIGURES	
Qualification no/Learning Aim Reference:	601/8791/8
Guided Learning Hours (GLH):	360
Total Qualification Time (TQT):	490
Learning Resources Available: NCFE	

Level 3 Diploma for Entry to the Uniformed Services (540) (720)


Minimum Entry Age: 16 **LRA** **UCAS**

FACTS AND FIGURES		
	DIPLOMA (540)	DIPLOMA (720)
Qualification no/Learning Aim Reference:	601/8792/X	601/8793/1
Guided Learning Hours (GLH):	540	720
Total Qualification Time (TQT):	710	950
Learning Resources Available: NCFE		

Level 3 Extended Diploma for Entry to the Uniformed Services

Minimum Entry Age: 16 **LRA** **UCAS**

FACTS AND FIGURES	
Qualification no/Learning Aim Reference:	601/8794/3
Guided Learning Hours (GLH):	1080
Total Qualification Time (TQT):	1430
Learning Resources Available: NCFE	


 **If you're interested in this qualification you may also be interested in:**
Level 3 Award and Extended Award in Higher Level Studies

Spectator Safety

Level 2 NVQ Certificate in Spectator Safety

Minimum Entry Age: 16 **LRA**

FACTS AND FIGURES	
Qualification no/Learning Aim Reference:	600/1333/3
Guided Learning Hours (GLH):	85
Total Qualification Time (TQT):	290
Credit Value:	29
Learning Resources Available: NCFE	

 **If you're interested in this qualification you may also be interested in:**
Level 2 Award in Understanding Stewarding at Spectator Events

Level 3 NVQ Certificate in Spectator Safety

Minimum Entry Age: 18 **LRA**

FACTS AND FIGURES	
Qualification no/Learning Aim Reference:	600/1326/6
Guided Learning Hours (GLH):	110
Total Qualification Time (TQT):	240
Credit Value:	24
Learning Resources Available: NCFE	

Level 2 Certificate in Spectator and Public Safety in Crowded Places

Minimum Entry Age: 16 **LRA**

FACTS AND FIGURES	
Qualification no/Learning Aim Reference:	603/0653/1
Guided Learning Hours (GLH):	76
Total Qualification Time (TQT):	223
Learning Resources Available: NCFE	

 **If you're interested in this qualification you may also be interested in:**
Level 2 Award in Understanding Stewarding at Spectator Events / **Level 2** NVQ Certificate in Spectator Safety

Level 2 Award in Understanding Stewarding at Spectator Events Spectator Events

Minimum Entry Age: 16 **LRA**

FACTS AND FIGURES	
Qualification no/Learning Aim Reference:	500/5546/X
Guided Learning Hours (GLH):	40
Total Qualification Time (TQT):	50
Credit Value:	5
Learning Resources Available: NCFE / Hallmark Education	


Level 2 Extended Certificate in Understanding Stewarding at Spectator Events

Minimum Entry Age: 16 LRA

FACTS AND FIGURES

Qualification no/Learning Aim Reference:	601/5252/7
Guided Learning Hours (GLH):	135
Total Qualification Time (TQT):	170
Credit Value:	17

Learning Resources Available: The Skills Network

 **If you're interested in this qualification you may also be interested in:**
 Level 2 NVQ Certificate in Spectator Safety / Level 2 Certificate in Spectator and Public Safety in Crowded Places

Travel


Level 2 Certificate in Introduction to Cabin Crew

Minimum Entry Age: 16 LRA

FACTS AND FIGURES

Qualification no/Learning Aim Reference:	600/0474/5
Guided Learning Hours (GLH):	153
Total Qualification Time (TQT):	220
Credit Value:	22

Learning Resources Available: NCFE

 **If you're interested in this qualification you may also be interested in:**
 Level 2 Award for Resort Representatives / Level 2 Certificate in Aviation Operations on the Ground (Knowledge)

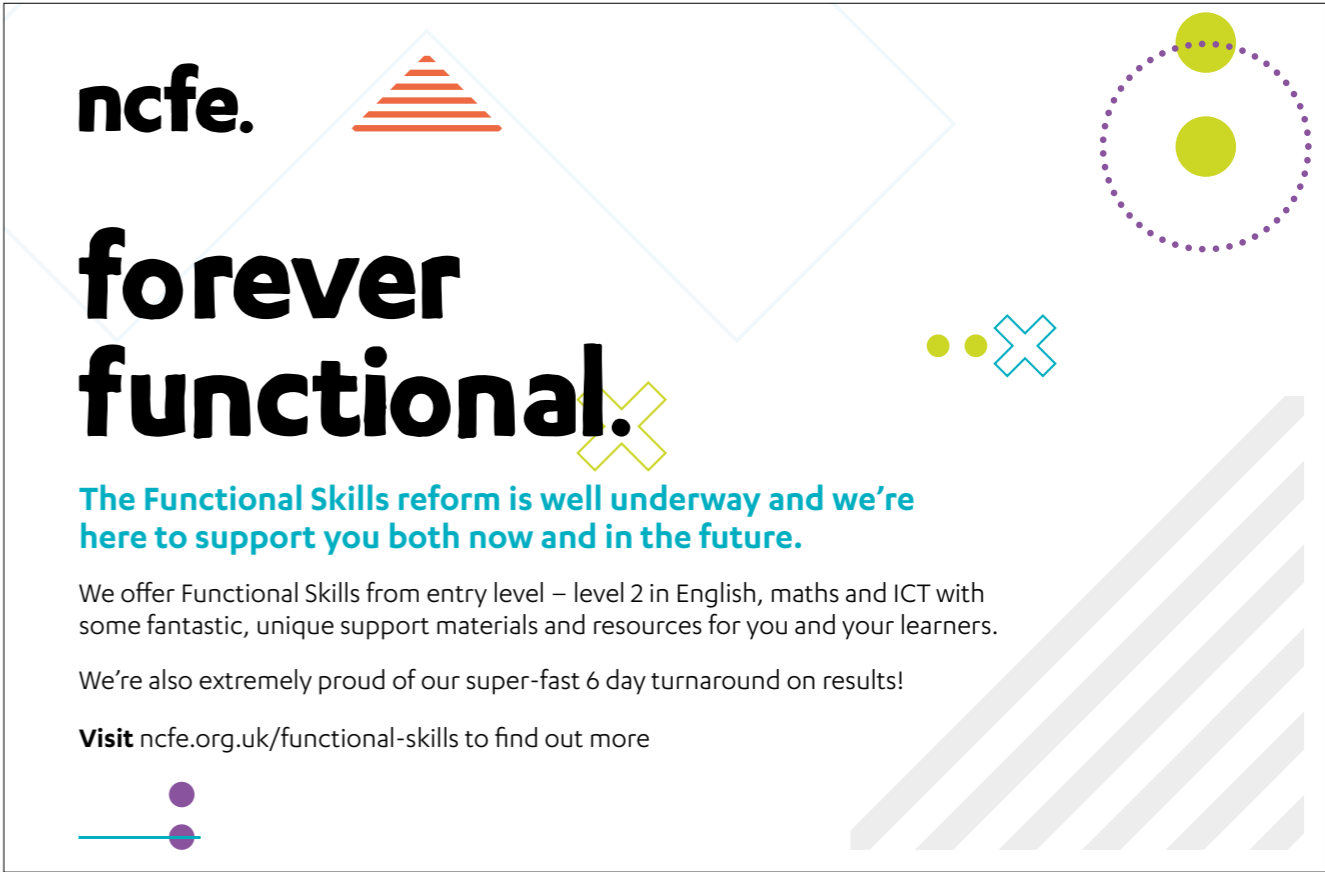
Level 2 Award for Resort Representatives

Minimum Entry Age: 16 LRA

FACTS AND FIGURES

Qualification no/Learning Aim Reference:	600/7817/0
Guided Learning Hours (GLH):	70
Total Qualification Time (TQT):	90
Credit Value:	9

Learning Resources Available: NCFE



ncfe.

forever functional.

The Functional Skills reform is well underway and we're here to support you both now and in the future.

We offer Functional Skills from entry level – level 2 in English, maths and ICT with some fantastic, unique support materials and resources for you and your learners.

We're also extremely proud of our super-fast 6 day turnaround on results!

Visit ncfe.org.uk/functional-skills to find out more

Level 1 Certificate in Travel and Tourism

Minimum Entry Age: 14

FACTS AND FIGURES

Qualification no/Learning Aim Reference:	601/3230/9
Guided Learning Hours (GLH):	118
Total Qualification Time (TQT):	180
Credit Value:	18

Level 2 Certificate, Extended Certificate and Diploma in Travel and Tourism

Minimum Entry Age: 14 **LRA**

FACTS AND FIGURES

	CERTIFICATE	EXTENDED CERTIFICATE	DIPLOMA
Qualification no/Learning Aim Reference:	601/6266/1	601/6267/3	601/6268/5
Guided Learning Hours (GLH):	240	360	480
Total Qualification Time (TQT):	360	540	720

Learning Resources Available: NCFE



If you're interested in these qualifications you may also be interested in:
Level 3 Certificate in Travel Services

Level 3 Introductory Diploma, Diploma and Extended Diploma in Travel and Tourism

Minimum Entry Age: 16 **LRA** **UCAS** **INTRO DIPLOMA & DIPLOMA ONLY**

FACTS AND FIGURES

	INTRODUCTORY DIPLOMA	DIPLOMA	EXTENDED DIPLOMA
Qualification no/Learning Aim Reference:	601/7934/X	601/7935/1	601/7936/3
Guided Learning Hours (GLH):	540	720	1080
Total Qualification Time (TQT):	720	960	1440

Learning Resources Available: NCFE



If you're interested in these qualifications you may also be interested in:
Level 3 Award and Extended Award in Higher Level Studies

Level 2 Certificate in Travel Services
(Leisure and Business / Tour Operators - Field Staff / Tour Operators - Head Office)

Minimum Entry Age: 16

FACTS AND FIGURES

Qualification no/Learning Aim Reference:	500/9846/9
Guided Learning Hours (GLH):	122
Total Qualification Time (TQT):	170
Credit Value:	17



If you're interested in this qualification you may also be interested in:
Level 3 Certificate in Travel Services

Higher Level Studies

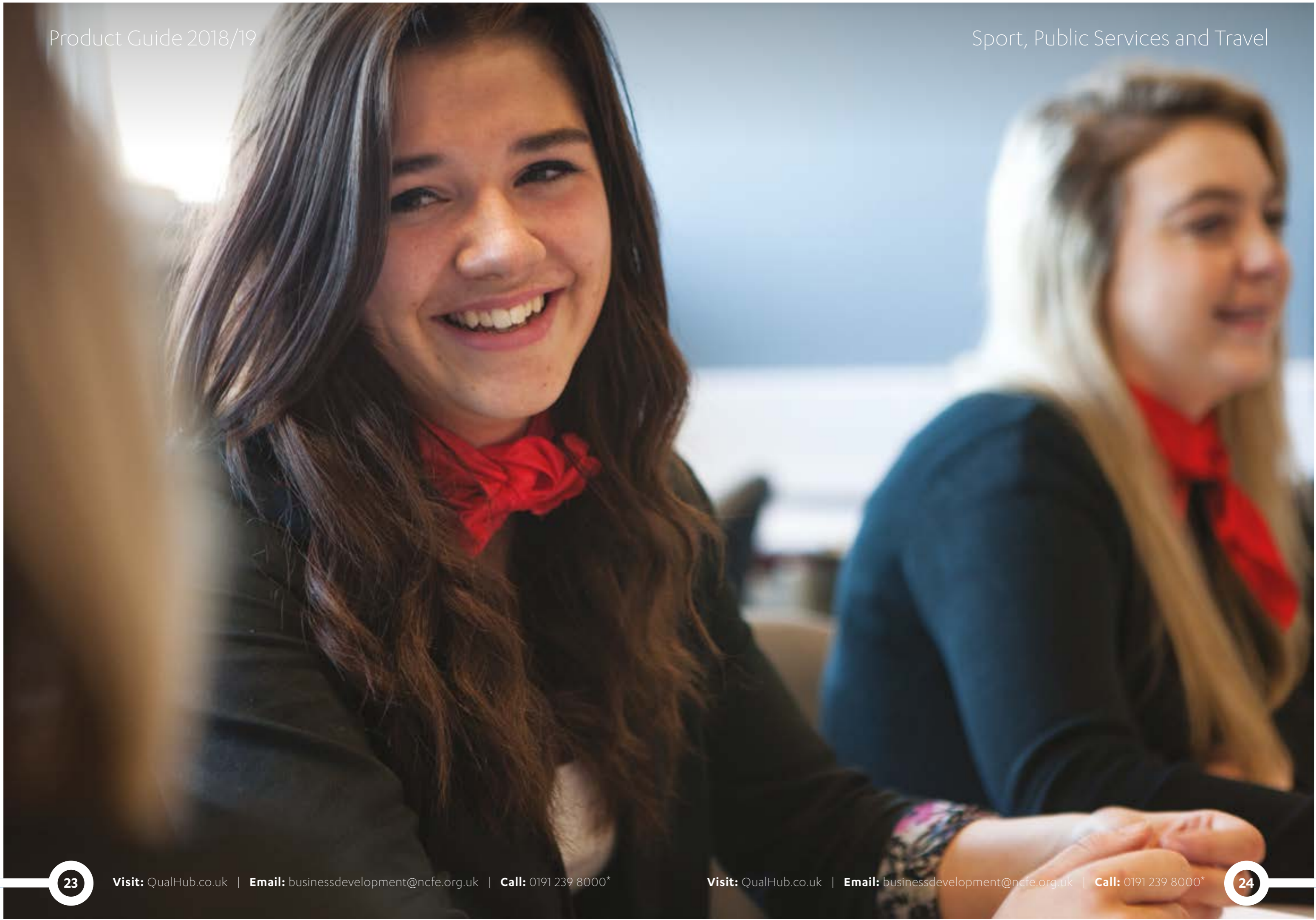
Level 3 Award and Extended Award in Higher Level Studies

Minimum Entry Age: 14 **LRA** **UCAS**

FACTS AND FIGURES

	AWARD	EXTENDED AWARD
Qualification no/Learning Aim Reference:	601/7789/5	601/7788/3
Guided Learning Hours (GLH):	30	60
Total Qualification Time (TQT):	45	90

Learning Resources Available: NCFE



NCFE

Q6
Quorum Business Park
Benton Lane
Newcastle upon Tyne
NE12 8BT

Call: 0191 239 8000*
Email: service@ncfe.org.uk
Visit: ncfe.org.uk
 **@NCFE**

*To continue our levels of customer service, telephone calls may be recorded.