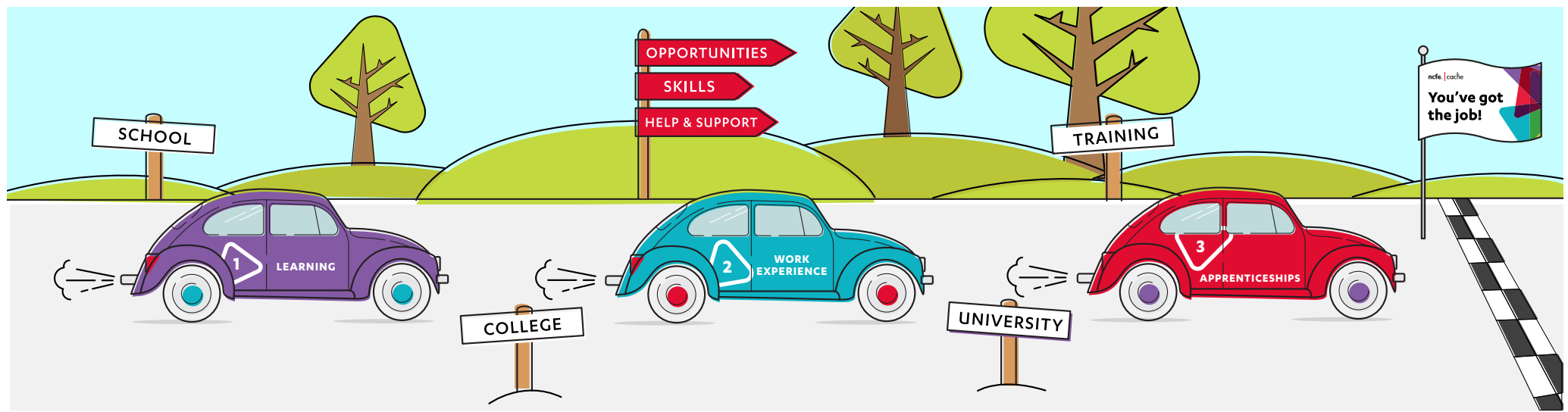


Blended learning programmes

A package of employability resources to support your careers information, advice and guidance requirements.



We know that ensuring you're meeting the requirements for good careers information, advice and guidance in school can be difficult.

That's why we offer a selection of resources to support employability in the classroom. Originally developed to support the employability requirements for learners at college as part of a Study Programme, the resources cover essential learning on personal, social and employability skills.

Accessed via the Moodle platform, blended learning offers:

- full packages of resources including scheme of work, lesson plans and activities
- a bespoke tutor interface to track learners' progress and access resources
- online interactive resources including videos, games and PDF workbooks
- extension resources and differentiation assessment challenges
- modules to support British values and Prevent strategies.

These resources and programmes have been developed in conjunction with employment specialists Reed to support employability within the curriculum.

Interested?

Contact learningresources@ncfe.org.uk to discuss employability resources to support your learners.

Why use these resources?


NCFE's blended learning employability programmes focus on progressing learners towards their chosen routes by building their confidence and boosting their skills.

They are specifically designed to:

- support transferable skill development
- reduce the need to plan lessons, source resources and create classroom activities
- support Ofsted expectations and good careers guidance requirements
- enhance PSHE lessons
- equip learners with the mindset and employability skills to meet their goals.

Moodle license with access to high quality resources

Number of learners	30-99	100-299	300-799	800-1999	2000+
Cost per learner	£2.70	£2.60	£2.50	£2.40	£2.30



Gain access to these resources for less than £85 for a class of 30 learners