

Madison

Madison is unsure about their career plans but is interested in working in a retail or business context. They found GCSEs difficult and did not obtain a grade 4 in either English or maths. Having struggled academically, they are looking forward to a more vocational route and moving into employment.



		PLH
Core Aim	NCFE Level 2 Diploma in Skills for Business (601/2624/3)	360
Employability, enrichment and pastoral (EEP)	Comprehensive suite of NCFE EEP resources including: <ul style="list-style-type: none"> • Team Working • Job Application Skills • How to Write a CV 	36
Work experience	2 weeks	70
English/maths	NCFE Level 1 Functional Skills Qualification in English (603/5058/1) NCFE Level 1 Functional Skills Qualification in Mathematics (603/5055/6)	55 55
Total PLH		576

Emily

Emily is a true innovator. She is full of ideas and is desperate to get the tools to become a fully-fledged entrepreneur. Having obtained a strong set of GCSEs, including grade 4 passes in maths and English, she is ready to progress to a level 3 course.



		PLH
Core Aim	NCFE Level 3 Diploma in Skills for Business (540): Enterprise (601/2647/4)	540
Employability, enrichment and pastoral (EEP)	Comprehensive suite of NCFE EEP resources including: <ul style="list-style-type: none"> • Dealing with Conflict • Creative Thinking • Producing Digital Promotional Content for Business 	36
Work experience	1 week	35
English/maths	N/A	0
Total PLH		611



Navid

Navid's caring nature has meant that he always wanted to work with young people. He applied himself well in his GCSEs and obtained good results, including a level 2 qualification in childcare. Unfortunately, he missed out on a grade 4 in maths.



Year 1

		PLH
Core Aim	NCFE CACHE Technical Level 3 Diploma in Childcare and Education (Early Years Educator) (601/8437/1)	469
	Qualification Placement	350
Employability, enrichment and pastoral (EEP)	Comprehensive suite of NCFE EEP resources including: <ul style="list-style-type: none"> • Job Search Skills • Developing Assertiveness • Understanding Mindset 	36
Work experience	N/A	0
English/maths	NCFE Level 2 Functional Skills Qualification in Mathematics (603/5060/X)	55
Total PLH		910

Year 2

		PLH
Core Aim	NCFE CACHE Technical Level 3 Diploma in Childcare and Education (Early Years Educator) (601/8437/1)	469
	Qualification Placement	400
Employability, enrichment and pastoral (EEP)	Comprehensive suite of NCFE EEP resources including: <ul style="list-style-type: none"> • Team Working • Job Application Skills • How to Write a CV 	36
Work experience	N/A	0
English/maths	N/A	0
Total PLH		905



Millie

Millie dreams of starting her own wedding photography business. She has grade 4 in English but not maths, already has a level 2 qualification in photography and is proficient using computers.



		PLH
Core Aim	NCFE Level 3 Diploma in Photography (601/0377/2)	450
Employability, enrichment and pastoral (EEP)	Comprehensive suite of NCFE EEP resources including: <ul style="list-style-type: none"> • Problem Solving in a Place of Work • Producing Digital Promotional Content for Business • Enterprise 	36
Work experience	1 week	35
English/maths	NCFE Level 2 Functional Skills Qualification in Mathematics (603/5060/X)	55
Total PLH		576

Rokas

Rokas wants to work in the gaming industry. He struggled with his GCSEs, but he has an affinity for ICT and engages in games design as a hobby. He does not hold a grade 4 in GCSE maths or English.



		PLH
Core Aim	NCFE Level 2 Diploma in Creative Media (Games) (601/4762/3/GAM)	455
Employability, enrichment and pastoral (EEP)	Comprehensive suite of NCFE EEP resources including: <ul style="list-style-type: none"> • Problem Solving at Work • Creative Thinking • Team Working 	36
Work experience	1 week	35
English/maths	NCFE Level 1 Functional Skills Qualification in English (603/5058/1)	55
	NCFE Level 1 Functional Skills Qualification in Mathematics (603/5055/6)	55
Total PLH		636



Sharla

Sharla is a very 'techy' individual and really relishes the prospect of working with data. She is a naturally shy person and is hoping the move to college will help her develop a sense of self. She did well in her GCSEs, especially maths and ICT.



Year 1

		PLH
Core Aim	T Level Technical Qualification in Digital Business Services (Level 3) (603/6902/4)	557
	Qualification Placement	145
Employability, enrichment and pastoral (EEP)	Comprehensive suite of NCFE EEP resources including:	36
	<ul style="list-style-type: none"> • Job Search Skills • Understanding Personal Identity • Understanding Mindset 	
Work experience	N/A	
English/maths	N/A	0
Total PLH		738

Year 2

		PLH
Core Aim	T Level Technical Qualification in Digital Business Services (Level 3) (603/6902/4)	557
	Qualification Placement	170
Employability, enrichment and pastoral (EEP)	Comprehensive suite of NCFE EEP resources including:	36
	<ul style="list-style-type: none"> • How to Write a CV • Developing Assertiveness • Dealing with Conflict 	
Work experience	N/A	
English/maths	N/A	0
Total PLH		763



Yang

Yang always loved the practical elements of GCSE science and is excited about the prospect of working in a laboratory. She achieved a good pass in all of her GCSEs but does not want to go to university.



Year 1

		PLH
Core Aim	T Level Technical Qualification in Science (Level 3) (603/6989/9)	567
	Qualification Placement	145
Employability, enrichment and pastoral (EEP)	Comprehensive suite of NCFE EEP resources including: <ul style="list-style-type: none"> • Understanding Mindset • Team Working • Understanding Personal Identity 	36
Work experience	N/A	0
English/maths	N/A	0
Total PLH		748

Year 2

		PLH
Core Aim	T Level Technical Qualification in Science (Level 3) (603/6989/9)	567
	Qualification Placement	170
Employability, enrichment and pastoral (EEP)	Comprehensive suite of NCFE EEP resources including: <ul style="list-style-type: none"> • How to Write a CV • Interview Skills • Job Search Skills 	36
Work experience	N/A	0
English/maths	N/A	0
Total PLH		773



John

John does not have a specific job role in mind, but he knows that he wants to work in a caring profession. He does not hold a grade 4 in maths or English and is not yet ready to start a level 3 course.

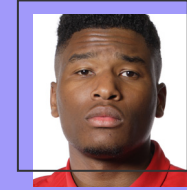


		PLH
Core Aim	NCFE CACHE Level 2 Extended Diploma in Health and Social Care (601/8855/8)	360
	Qualification Placement	35
Employability, enrichment and pastoral (EEP)	Comprehensive suite of NCFE EEP resources including: <ul style="list-style-type: none">• Dealing with Conflict• Team Working• Understanding Mindset	36
	Work experience	N/A
English/maths	NCFE Level 1 Functional Skills Qualification in English (603/5058/1)	55
	NCFE Level 1 Functional Skills Qualification in Mathematics (603/5055/6)	55
Total PLH		541



Uche

Uche worked hard at school and achieved a good set of GCSE results, just missing out on a grade 4 in English. He particularly loved level 2 uniformed services, and now dreams of becoming a police officer.



Year 1

		PLH
Core Aim	NCFE Level 3 Diploma in Policing (720) (603/5040/4)	360
Employability, enrichment and pastoral (EEP)	Comprehensive suite of NCFE EEP resources including: <ul style="list-style-type: none"> • Dealing with Conflict • Developing Assertiveness • Team Working 	36
Work experience	3 weeks	105
English/maths	NCFE Level 2 Functional Skills Qualification in English (603/5054/4)	55
Total PLH		556

Year 2

		PLH
Core Aim	NCFE Level 3 Diploma in Policing (720) (603/5040/4)	360
Employability, enrichment and pastoral (EEP)	Comprehensive suite of NCFE EEP resources including: <ul style="list-style-type: none"> • British Values • Communication Skills • Understanding Mindset 	36
Work experience	5 weeks	175
English/maths	N/A	0
Total PLH		571



Jennie

Academia was never Jennie's true calling, and she is looking forward to studying something more practical. She is excited about joining a branch of the armed forces and hopes this college course will help her find her future career path. She does not hold a grade 4 in English or maths.



		PLH
Core Aim	NCFE Level 2 Diploma for Entry to the Uniformed Services (601/2456/8)	370
Employability, enrichment and pastoral (EEP)	Comprehensive suite of NCFE EEP resources including: <ul style="list-style-type: none">• Dealing with Conflict• Team Working• Understanding Mindset	36
Work experience	1 week	35
English/maths	NCFE Level 1 Functional Skills Qualification in English (603/5058/1)	55
	NCFE Level 1 Functional Skills Qualification in Mathematics (603/5055/6)	55
Total PLH		551



Evan

Evan has always been drawn towards caring professions and is now relishing starting a level 3 course, having already achieved a level 2 qualification. He achieved a strong set of GCSEs, including grade 4 in English and maths.



		PLH
Core Aim	NCFE CACHE Level 3 Diploma in Adult Care (603/2618/9)	399
Employability, enrichment and pastoral (EEP)	Comprehensive suite of NCFE EEP resources including: <ul style="list-style-type: none">• British Values• Working in a Team• Dealing with Conflict	36
Work experience	4 weeks	140
English/maths	N/A	0
Total PLH		575



Philippa

Philippa grew up in the Peak District and is an outdoor enthusiast, excelling in kayaking and rock climbing. She dreams of opening an outdoor adventure centre back home and hopes to develop her business skills alongside her level 3 course.



Year 1

		PLH
Core Aim	NCFE Level 3 Diploma in Sport and Physical Activity (720): Outdoors (601/8882/0/OUT)	360
Employability, enrichment and pastoral (EEP)	Comprehensive suite of NCFE EEP resources including: <ul style="list-style-type: none"> • Business and Customer Awareness • Creating an Online Professional Profile • Principles of Team Leading 	36
Work experience	5 weeks	175
English/maths	N/A	0
Total PLH		571

Year 2

		PLH
Core Aim	NCFE Level 3 Diploma in Sport and Physical Activity (720): Outdoors (601/8882/0/OUT)	360
Employability, enrichment and pastoral (EEP)	Comprehensive suite of NCFE EEP resources including: <ul style="list-style-type: none"> • Producing Digital Promotional Content for Business • Principles of Digital Marketing • Problem Solving in a Place of Work 	36
Work experience	5 weeks	175
English/maths	N/A	0
Total PLH		571

Marco

Marco is a high quality footballer and is starting his career as a semi-professional player. He enjoys working with young people and wants to become a coach in the long term. He did not achieve a grade 4 in English or maths.



		PLH
Core Aim	NCFE Level 2 Diploma in Sport: Sports Coaching (601/3038/6/COA)	290
Employability, enrichment and pastoral (EEP)	Comprehensive suite of NCFE EEP resources including: <ul style="list-style-type: none">• Working in a Team• Problem Solving in a Place of Work• Job Search Skills	36
Work experience	4 weeks	140
English/maths	NCFE Level 1 Functional Skills Qualification in English (603/5058/1)	55
	NCFE Level 1 Functional Skills Qualification in Mathematics (603/5055/6)	55
Total PLH		576

Sophie

Having grown up in a seaside town, Sophie has seen the profound effect that the tourism industry can have on an area. She is excited to explore this area more at college, and to improve her understanding of the global travel economy. She achieved a grade 4 in English and maths at GCSE.



Year 1

		PLH
Core Aim	NCFE Level 3 Extended Diploma in Travel and Tourism (601/7936/3)	540
Employability, enrichment and pastoral (EEP)	Comprehensive suite of NCFE EEP resources including: <ul style="list-style-type: none">• Team Working• Building Professional Relationships• Managing Change	36
Work experience	1 week	35
English/maths	N/A	0
	Total PLH	611

Year 2

		PLH
Core Aim	NCFE Level 3 Extended Diploma in Travel and Tourism (601/7936/3)	540
Employability, enrichment and pastoral (EEP)	Comprehensive suite of NCFE EEP resources including: <ul style="list-style-type: none">• Interview Skills• Job Search Skills• Writing a CV	36
Work experience	1 week	35
English/maths	N/A	0
	Total PLH	611

