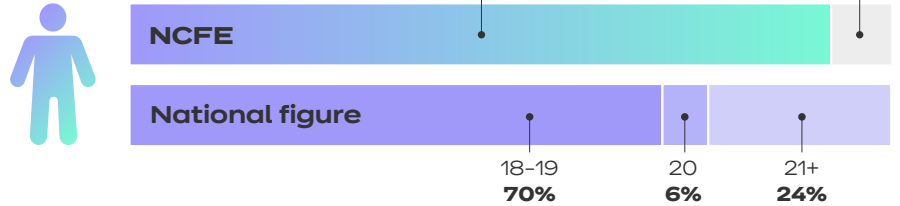
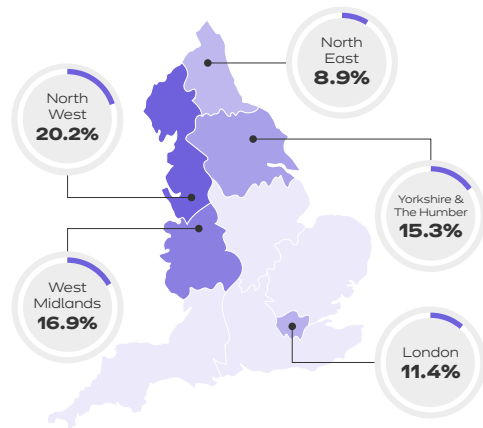


UCAS Applicants

Age



Top 5 regions



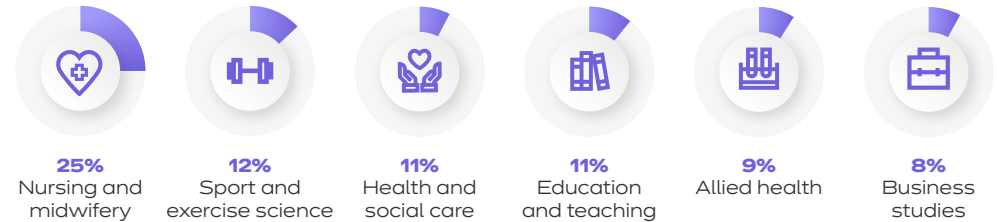
The highest proportion of NCFE UCAS applicants were from the North West (20%) whereas nationally the highest proportion of learners were from London (also 20%).

27% of NCFE learners who had been accepted onto HE courses through UCAS had received free school meals. This is higher than the national figure of 12%.

59% of NCFE learners who had applied for HE courses through UCAS lived in Quintiles 1 and 2 based on the Indices of Multiple Deprivation 2019 (IMD2019) – these geographical areas make up the most deprived in England.

UCAS Applications

Top NCFE UCAS Application Subjects



75% Three quarters (75%) of allied health applications came from NCFE learners who studied Health and Social Care.

63% Just under two thirds (63%) of health and social care applications came from NCFE learners who studied Health and Social Care.

Over two thirds (70%) of education and teaching applications came from NCFE learners who studied Child Development and Well Being.

The majority (92%) of sport and exercise sciences applications came from NCFE learners who studied Sport, Leisure and Recreation.